



EPIP – U.S., July 2016

Stainless steel drain adaptor

Product innovation

Stainless steel drain adaptor

Product overview

What is the application space?

In the electrical system of a food and beverage facility and elsewhere, the T&B Fittings Stainless Steel Drain Adapter provides the means to drain accumulated moisture or small debris from stainless steel electrical enclosures for non-threaded connections. Current solutions for this issue involve improvised breathers and require welding and caulking.



Stainless Steel Drain Adaptor
FG-DA-3/8



Ball Valve for Drain Adaptor
DBV-1/4



Stainless Steel Drain Adaptor
and Ball Valve Assembly

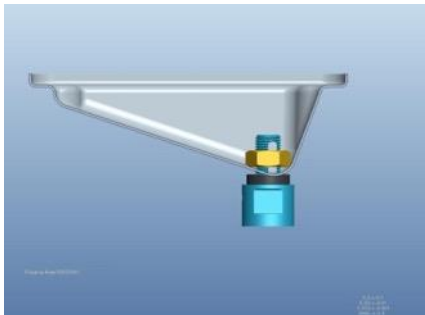
What is the product?

An easy-to-install, UL[®] Listed drain point at any ordinary location of the electrical system where threaded connections are not possible. An optional stainless steel ball valve can be assembled to the drain adaptor to provide the convenience of controlling and inspecting the drainage process, and by closing the valve, the assembly becomes suitable for wash-down areas.

Stainless steel drain adaptor

Value proposition

- Offers an elegant, UL approved, one product solution as a drain point at any location of the electrical system when threaded connections are not possible and without the need for welding, caulking improvisations.
- Uses only SST Type 316 and FDA approved gaskets material.
- Both Drain and Ball Valve are NSF certified.
- When combined with the T&B's SST ball valve it has a UL 4X Type rating allowing use in wash down applications.
- No separate breather line needed.



Replaces this improvisation



Stainless steel drain adaptor

Feature and benefits

- The drain adaptor and ball valve are NSF Certified for food and beverage applications.
- When the drain adapter is used in conjunction with the ball valve, the assembly offers a UL Type 4X rating and is suitable for wash down areas.
- The adapter and valve are both constructed of Type 316 Stainless Steel for superior corrosion resistance. **(Competitor's adaptor has Type 304 sleeve over PVC core).**
- Innovative, compact body design and special-grade silicone gasket make the drain adapter suitable for installation in tight spaces and on curved surfaces.

Stainless steel drain adaptor

Feature and benefits

- Large drain orifices, an integral breather, and no moving parts ensures long-lasting performance without clogging, even when exposed to viscous liquids or small debris. **(Competitor's has internal float)**.
- Both the drain adaptor and the ball valve offer a ¼" female NPT threaded connection for assembling a drain tube to direct the liquid removal.
- Adaptor has only three parts. **(Competitor's has 6 parts)**.

Certifications

- ❑ cULus Listed Type 4X when the ball valve is assembled to the drain adaptor.
- ❑ NSF Certified per NSF/ANSI Standard 169.
- ❑ Manufactured with FDA approved materials.

Stainless steel drain adaptor

Vertical markets focus

T&B Fittings

- **Food and beverage plants**
- **Pharmaceutical and cosmetic plants**
- Pulp and paper mills
- Chemical process plants
- Petrochemical operations
- Oil and gas



Power and productivity
for a better world™

